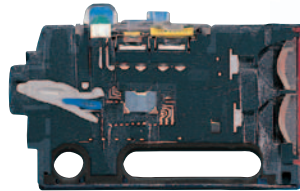


# Perfectly Water-Proof Sensor

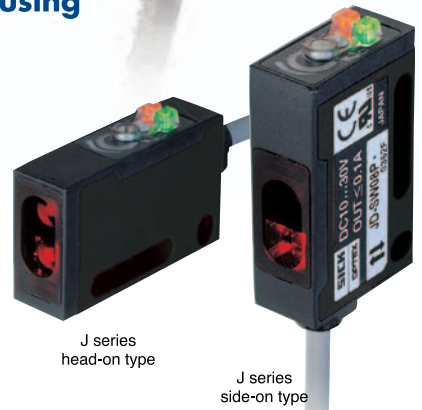
## J series

IP-67g of perfect water-tightness even to oil, realized by fully injected epoxy inside the body. (IP67)  
Tough also to shock and vibration. (100G,-1000m/S<sup>2</sup>)

- Through-beam type  
JT-H(S)1000NR / H(S)1000PR : 10m
- Retro-reflection type with polarizing filter  
JR-H(S)300N / H(S)300P : 3m
- Diffused reflection type  
JD-H(S)80N / H(S)80P : 80cm
- Limited range[convergent]type  
JD-H(S)L03N / H(S)L03P : 2-5cm
- Wide angle[divergent]type  
JD-H(S)W08N / H(S)W08P : 8cm
- M8 Connector versions are available for all the NPN / PNP type



**Epoxy filled in the housing for water tightness**

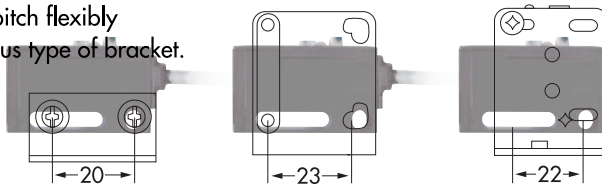


### Features

#### Long screw hole enhancing flexibility of mounting (Applicable both to M3 and M4)

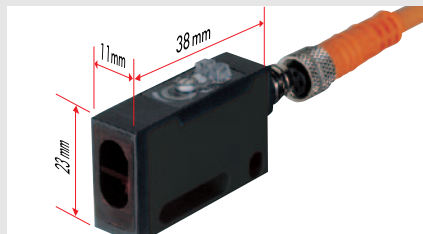
(Unit : mm)

25.4mm mounting pitch flexibly applicable to various type of bracket.



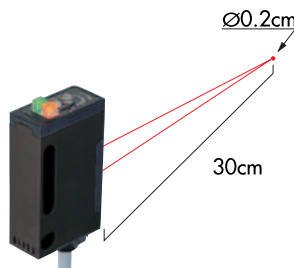
#### M8 connector for easy maintenance.

Small M8 connector type enables also to be installed even in a narrow space.



#### Visible red spot lightening up target point

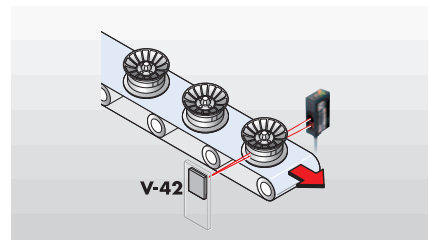
The visible red LED helps your optical alignment. The red spot is approximately 0.2cm dia at 30cm away from the sensor.



### Applications (example)

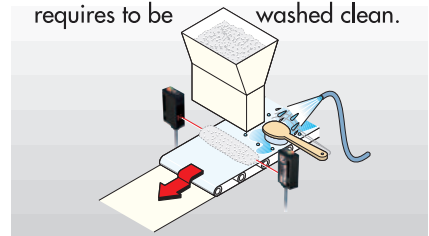
#### Counting wheels

100G protected J series is ideal for conveyor that gives continuous vibration.



#### Existing of cookie paste

IP67G a perfect water-tight J series is ideal for cookie making machine that requires to be washed clean.



# Product Type (N=NPN,P=PNP)

	Optical system	Side on	Head on	Optical system	Side on	Head on
Cable type	Through-beam	JT-S1000NR / JT-S1000PR	JT-H1000NR / JT-H1000PR	Through-beam	JT-S1000CNR / JT-S1000CPR	JT-H1000CNR / JT-H1000CPR
	Retro-reflection	JR-S300N / JR-S300P	JR-H300N / JR-H300P	Retro-reflection	JR-S300CN / JR-S300CP	JR-H300CN / JR-H300CP
	Diffused reflection	JD-S80N / JD-S80P	JD-H80N / JD-H80P	Diffused reflection	JD-S80CN / JD-S80CP	JD-H80CN / JD-H80CP
	Limited range (convergent)	JD-SL03N / JD-SL03P	JD-HL03N / JD-HL03P	Limited range (convergent)	JD-SL03CN / JD-SL03CP	JD-HL03CN / JD-HL03CP
	Wide angle (divergent)	JD-SW08N / JD-SW08P	JD-HW08N / JD-HW08P	Wide angle (divergent)	JD-SW08CN / JD-SW08CP	JD-HW08CN / JD-HW08CP
Connector type						

## Specifications

Model	Through-beam	Retro-reflection	Diffused reflection	Limited range (convergent)	Wide angle (divergent)
Cable type NPN/PNP	JT-H(S)1000NR / H(S)1000PR	JR-H(S)300N / H(S)300P	JD-H(S)80N / H(S)80P	JD-H(S)L03N / H(S)L03P	JD-H(S)W08N / H(S)W08P
M8 connector type NPN/PNP	JT-H(S)1000CNR / H(S)1000CPR	JR-H(S)300CN / H(S)300CP	JD-H(S)80CN / H(S)80CP	JD-H(S)L03CN / H(S)L03CP	JD-H(S)W08CN / H(S)W08CP
Sensing range	10 m	3 m	80 cm	2 - 5 cm	8 cm
Response time	0.5msec Max				
Operation Mode	Light on / Dark on switchover				
Hysteresis	NIL		20% Max		
Light source	Red				Infrared
Control output	NPN or PNP Open collector, 100mA Max / 30V DC				
Supply voltage	DC 10 to 30 V including 10% of ripple				
Conformity	JIS / C4525, CE, UL				
Power consumption	Emitter:20mA, Receiver 15mA		20mA Max		
Sensitivity adjustment	2-turn Potentiometer				
Indicator	2 indicator, Output(Orange), Stable(Green)				
Protection category	IEC 144 IP67, JEM IP67g				
Shock resistance	100G(1,000m/S <sup>2</sup> ),X-Y-Z axis 3times				
Environment illuminance	Sunlight:10,000lux max., Incandescent lamp:3,000 lux max.				
Housing Material	PBT(Case),PC(Lens)				

## Dimensions

● **Head ON type**

● **slit SJ-01** (Optical only for JT types)

Slit size	Installation	Minimum	Maximum distance
1×10mm	Both of emitter / receiver	0.6mm	1m

\* Just split the sticker to fix on the surface of lens.

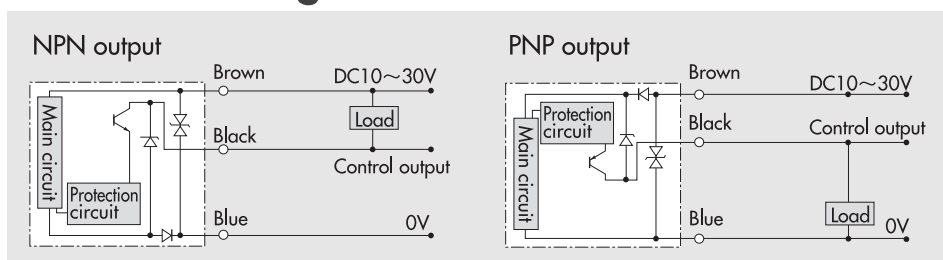
● **Side ON type**

● **Standard reflector V-61**

● **Anti-blur reflector V-60k**

Unit : mm

## Connection diagram



\*Technical date, specsheet, instruction manual and this catalogue is available for download. Visit our Website ; <http://www.optex-fa.com> For technical support please call our authorized distributor in your country that is also listed in our Website.



**OPTEX FA CO., LTD.**

607-8085 Kyoto, Yamashina-ku, Takehanadounomae-cho 46-1, Japan  
TEL +81-75-594-8123 FAX +81-75-594-8124